

Identification key - *Obama nungara*

Where can the flatworm be found in the nursery

- Under the container, on the ground or on the mypex.
- On the underside of the container
- Inside the pot - Lift out the plant and look inside the container at the bottom of the pot and on the sides. Look at the rootball, on the underside and the sides.
- Under and inside trays and black boxes for perennials. Check all the nooks and crannies.
- The worm often occurs one by one.
- Look for slime trails or something that glistens - this can be a clue.
- Egg capsules often occur one at a time. They can be fastened anywhere the worm can be found: on the ground (mypex) under a pot, inside a pot and under and inside trays.

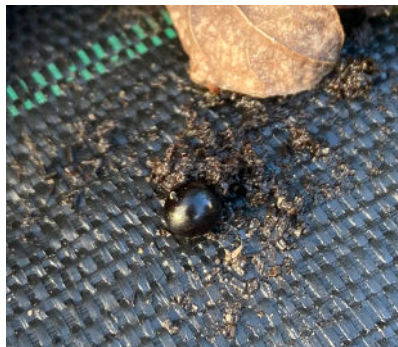
Adult worm underside of container.



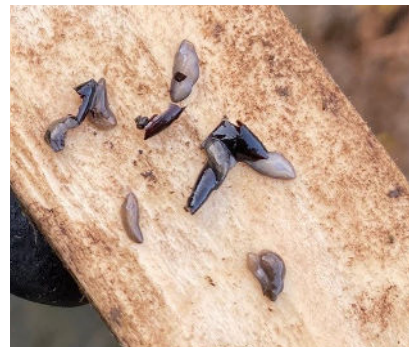
Adult worm with slime.



The underside of the worm with an orange egg capsule.



The egg capsules turn black after a few days.



Recently hatched flatworms.